

## Like snowflakes, each store in Ypsi is unique.

Ypsi's one-of-a-kind shops and restaurants deliver selection and service with that hometown feel. Just blocks from home you'll find toys, antiques, the latest fashions, vintage clothing and so much more. The shops, galleries and boutiques of Ypsi feature unique and handcrafted items you can't find anywhere else. Like to make it yourself? From murals to Merlots to music, everything you need to create your masterpiece is right here in Ypsi. And after all that shopping, why not treat yourself to a night on the town? Whether you like exotic cuisine or down-home cooking, Ypsi has eateries to suit almost every taste.

## Buying local makes sense.

Why buy locally? Local business owners are committed to the success of Ypsilanti. They understand and embrace the interests and values of our community. Neighborhood businesses and service providers care about you as an individual and bring a personal touch to everything they do. Shopping locally benefits Ypsi by keeping your dollars in the community. Neighborhood businesses improve life in Ypsi through sponsorship of events such as the Heritage Festival, the summer concert series, city beautification projects and much more. Spending your dollars close to home brings you better value through more personalized service, higher quality merchandise and a stronger community.

Share your great gift ideas with your neighbors!  
(Or steal some great gift ideas from them!)  
Take the *Shop Ypsi for the Holidays Challenge*.  
Find out about holiday events in Ypsi.

[ypsi.buylocalmichigan.org](http://ypsi.buylocalmichigan.org)

This guide was produced by community volunteers CALEB BROKAW, LESLEY CHASE, GARY CLARK, LISA DUGDALE, AMANDA EDMONDS, SHANNON GORDON, KEVIN HILL, JIM KARNOPP, LINETTE LAO, ERIC LAGERGREN, MARK MAYNARD, BRIAN MCCLEMENS, RICHARD MURPHY, SHARRYL SULLIVAN, KATY WORTMAN, and lots of other folks who want Ypsilanti to succeed and thrive.

A special thank you to former Ypsilantian KAREN CONNEELY, who got this project off the ground last year. We couldn't have done it without her!

The printing of this brochure was funded by donations from individuals as well as the following organizations. Thanks to all of you.



# SHOP YPSI

FOR THE HOLIDAYS



*Your Guide to Giving Wonderful Presents  
While Saving Time, Gasoline,  
and the Local Economy.*

# 30

## GREAT GIFT IDEAS

Maggie's Organic Socks and Organic Chocolate Bars (Ypsi Food Co-Op) | A Pound of Fresh Roasted Coffee Beans (Ugly Mug, Bombadill's or Cafe Luwak) and a Froot Loops Coffee Mug (Gordon's) | Motawi Tiles (Bowerbird Mongo) | Cranberry-Scented All-Natural Hand Lotion (Simply deVine) | Holiday Ornament of the Ypsilanti Freighthouse (Quinn's Essentials) | "I'm Saving Up to Clone My Cat" Piggy Bank (The Rocket) | Decadent Goodies such as Kit Kat Bars or Ho-Dongs (Queen of Hearts Pastries & Bakery) | Horn or Basket for a Bicycle (Bicycles in Town) | Tin Robots and Wind-Up Toys (The Rocket) | 2008 Growing Hope Calendar (Ypsi Food Co-Op) | Timberland Baby Booties (Puffer Red's) | Reusable Shopping Bags (The Rocket) | Oprah's Favorite Tea Bags (Quinn's Essentials) | Make Your Own Wine with Customized Labels (U-Brew) | One-of-a-Kind Screenprinted Spiral-Bound Notebook (VG Kids) and a Fountain Pen (Art Attack) | One-Year Membership to the Ypsi Food Co-Op | Amazing Geodes (World of Rocks) | Growler of Beer and Pint Glasses (Corner Brewery) | Guitar Strings (Fast Eddies) or Lessons (Dennis' Music) | Beeswax Candles and Brass Bells (Ypsi Food Co-Op) | Tool Box and Gift Certificate (Congdon's Ace Hardware) | Yoga Classes (Ypsi Studio) | A Manicure (Spa Eleven) or a Tattoo (Liquid Swords or Ink for Life) | Collectible Carnival Glassware (Salt City Antiques) | Children's Handknit Bear Hat (Simply deVine) | A Commissioned Painting (Nelson Amos Studios) | Basket of Snacks and Sauces (Dos Hermanos) | Exclusive Styles of Nike Shoes (Puffer Red's) | Relaxing Weekend at a Bed and Breakfast (Queen's Residence or Parrish House) | Antique Quilt (Apple Annies/Jim MacDonald's Antiques)

Explore Ypsilanti and discover many more great gifts!

### ANTIQUES & VINTAGE

#### Apple Annie's Vintage Clothing & Jim MacDonald's Antiques

29 E. Cross St., Ph. 481-0555  
Mon-Sat 11-5:30, Sun 12-5

#### Bowerbird Mongo

210 W. Michigan Ave., Ph. 482-4595  
Fri-Sat 5-8 and by appt.

#### Materials Unlimited

2 West Michigan Ave., Ph. 483-6980  
Tues-Sat 10-5

#### Salt City Antiques and Collectibles

15 E. Cross St., Ph. 487-1259  
Mon-Tue 10-6, Thurs-Sat 10-6,  
Sun 10-5

#### Silver Spoon Antiques

25 E. Cross St., Ph. 484-9960  
Mon-Sat 11-5, Sun 12-5

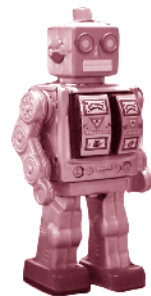
### ART & MUSIC

#### Art Attack

731 W. Cross St.,  
Ph. 483-7975  
Mon-Th 9-6, Fri 9-5,  
Sat 10-3

#### Dennis' Music

27 E. Cross St.,  
Ph. 217-0547  
Mon, Wed, & Fri 11-6,  
Tue & Thurs 11-8,  
Sat 10-6, Sun 12-4



### FAST EDDIE'S MUSIC

212 W Michigan Ave., Ph. 484-7300  
Mon-Sat 11-7, Sun by appt.

#### Nelson Amos Studio

9 E. Cross St.,  
Ph. 484-2787  
Tue-Fri 11-5, Sat 10-5

### BICYCLES

#### Bicycles in Town

118 W Michigan Ave.,  
Ph. 485-3664  
Call for hours.

### FOOD & DRINK GIFTS

#### Corner Brewery

720 Norris St., Ph. 480-2739  
Mon-Sat 2-midnight  
Sun 2-10

#### Dos Hermanos

412 W. Michigan Ave.,  
Ph. 487-8802  
Call for Hours

#### The Queen of Hearts Pastries & Bakery

32 E. Cross St., Ph. 487-9223  
Tue-Fri 9-6, Sat 9-3

#### Terry Bakery

119 W. Michigan Ave.,  
Ph. 482-9511  
Thurs-Fri 5:30am-Noon,  
Sat 5:30am-1pm, by appt.

### U-BREW

1486 Washtenaw Ave., Ph. 337-2015  
Tues-Fri 11-7, Saturday 9-5

#### Ypsilanti Food Co-op and

#### River Street Bakery

312 N. River St.,  
Ph. 483-1520  
Sun-Fri 10-9, Sat 9-9



### CANDY & TOYS

#### Gordon's Five and Dime

23 E. Cross St., Ph. 482-1830  
Mon-Th 11-6, Fri 11-8, Sat 10-6,  
Sun 12-5

#### The Rocket

103 W. Michigan Ave., Ph. 483-2291  
Mon-Sat 9-10, Sun 11-7

### CLOTHING & JEWELRY

#### Avenue Jewelers

112 W. Michigan Ave., Ph. 480-9720  
Tue-Thurs 11-6, F 11-8, Sat 12-4

#### Cannon's

480 S. Hamilton St., Ph. 482-9200  
Mon-Thurs 10-8, Fri-Sat 10-10

#### Olde Towne Coin & Gold

24 E. Cross St., Ph. 483-6155  
Mon-Fri 10-6, Sat 11-4, Sun 1-5

#### Puffer Red's Records and Boutique

113 W. Michigan Ave., Ph. 485-7050  
Mon-Sat 10-8, Sun 12-5

### Rapid Shoe Fix and Boot Shop

115 Pearl St., 483-1321  
Mon-Fri 9-5:30, Sat 9-4

### Studio Glamour Fashions

214 W. Michigan Ave., Ph. 485-4133  
Tue-Thur 11-6, Fri-Sat 11-8

### VG Kids

216 W Michigan Ave., Ph. 480-0667  
Mon-Fri 9-7

### FLOWERS

#### The Enchanted Florist

46 E. Cross St.,  
Ph. 547-9230  
Mon 9-6, Tue-Fri 9-6, Sat 9-4

### GIFTS &

### HOME GOODS

#### Apotheke Handmade Bath Products

50 E. Cross St., Ph. 484-3489  
Tue-Fri 12-7, Sat 10-7, Sun 12-5

#### Cheeky Monkey

33 E Cross St., Ph. 483-4060  
Mon-Thurs 10-6, Fri 10-8, Sat 9-6,  
Sun 12-4

#### Cross Street Book Shop

523 W. Cross St., Ph. 484-3000  
Mon-Fri 12-8, Sat 1:30-8, Sun 1-6

#### Look In The Attic

110 W. Michigan Ave. 877-544-9887  
Mon-Fri 10-6

### Quinn's Essentials

19 E. Cross St., Ph. 544-4690  
Mon-Thurs 11-7, Fri 11-8, Sat 10-5,  
Sun 12-5

#### Simply deVine Cards-N-Gifts

126 W. Michigan Ave., Ph. 483-9251  
Mon-Wed 10-6, Thurs & Fri 10-7,  
Sat 10-6

#### World of Rocks

42 N. Huron St., Ph. 481-9981  
Mon, Tue, & Thurs 11-5  
Wed & Fri 11-7, Sat 10-6, Sun 1-5

### HARDWARE

#### Congdon's Ace Hardware

111 Pearl St.,  
Ph. 482-2545  
Mon-Fri 8-5:30, Sat 8-5

### SERVICES

#### Eleven West

11 W Michigan Ave.,  
Ph. 485-3150  
Tue 9-5, Wed 9-8,  
Thur-Fri 9-9, Sat 9-4

#### Ink for Life

50 N Huron St, Ph. 485-8288  
Call for hours.

#### Ypsi Studio

25 N. Washington St., Ph. 845-0542  
Call for hours.

### Parish House Inn (Bed & Breakfast)

103 South Huron St., Ph. 480-4800

### Queen's Residence (Bed & Breakfast)

220 S Huron St., Ph. 340-2805



### Shop, Eat, Drink and Be Merry.

Enjoy a warm drink and a  
tasty treat at one of our local cafes:

Cafe Luwak - 42 E. Cross

Bombadill's - 217 W. Michigan Ave.

The Ugly Mug - 317 W. Cross St.

For a list of locally owned Ypsilanti bars  
and restaurants, please visit our web site.

### Wrapping It Up.

Beautiful wrapping supplies can be  
found at Simply deVine. Art Attack  
carries a wide selection of unique  
specialty papers, as well as everything  
you might need to make your own gift  
wrapping.

Learn More. Share Gift Ideas.  
[ypsi.buylocalmichigan.com](http://ypsi.buylocalmichigan.com)